

Project Name: \_\_\_\_\_  
 Location: \_\_\_\_\_  
 Engineer: \_\_\_\_\_  
 Submitted to: \_\_\_\_\_  
 Submitted by: \_\_\_\_\_  
 Reference: \_\_\_\_\_

Approval: \_\_\_\_\_  
 Date: \_\_\_\_\_  
 Construction: \_\_\_\_\_  
 Unit #: \_\_\_\_\_  
 Drawing #: \_\_\_\_\_

**Performance**

*Indoor Unit Model No:* VAM1200GVJU  
*Rated Cooling Capacity (Btu/hr):* N/A  
*Sensible Capacity (Btu/hr):* N/A  
*Cooling Input Power (kW):* 1.72  
*Rated Heating Capacity (Btu/hr):* N/A  
*Heating Input Power (kW):* 1.72

*Indoor Unit Type:* VAM  
*Rated Cooling Conditions* Indoor: N/A  
 Ambient: 5 - 122 (80% RH)  
*Rated Heating Conditions* Indoor: N/A  
 Ambient: 5 - 122 (80% RH)  
*Rated Piping Length (ft)* N/A  
*Rated Height Separation (ft)* N/A

**Indoor Unit Details**

*Power Supply (V/Hz/Ph):* 208-230/60/1ph  
*Power Supply Connections:* L1, L2, Ground  
*Min. Circuit Amps MCA (A):* 8.1  
*Max. Overcurrent Protection (MOP) (A):* 15  
*Dimensions (HxWxD):* 30-7/8x63-3/4x47-13/16  
*Panel (HxWxD):* N/A  
*Net Weight (lbs):* 346  
*Net Weight with Panel (lbs):* N/A

*Airflow Rate (CFM wet coil)* 1200/1200/930  
*Moisture Removal (pt/h):* \_\_\_\_\_  
*Gas Pipe Connection (inch):* \_\_\_\_\_  
*Liquid Pipe Connection (inch):* \_\_\_\_\_  
*Condensate Connection (inch):* \_\_\_\_\_  
*Sound Pressure Level (dBA):* 44.5  
*Sound Power Level (dBA):* 38.5  
*External Static Pressure/Max (inWg):* 0.24 - 0.56  
*Controller Name:* \_\_\_\_\_

**VAM1200GVJU**



**VAM1200GVJU**

Std U.S. Warranty: 6 year heat exchanger core,  
 1yrs Parts

Project Name: \_\_\_\_\_  
 Location: \_\_\_\_\_  
 Engineer: \_\_\_\_\_  
 Submitted to: \_\_\_\_\_  
 Submitted by: \_\_\_\_\_  
 Reference: \_\_\_\_\_

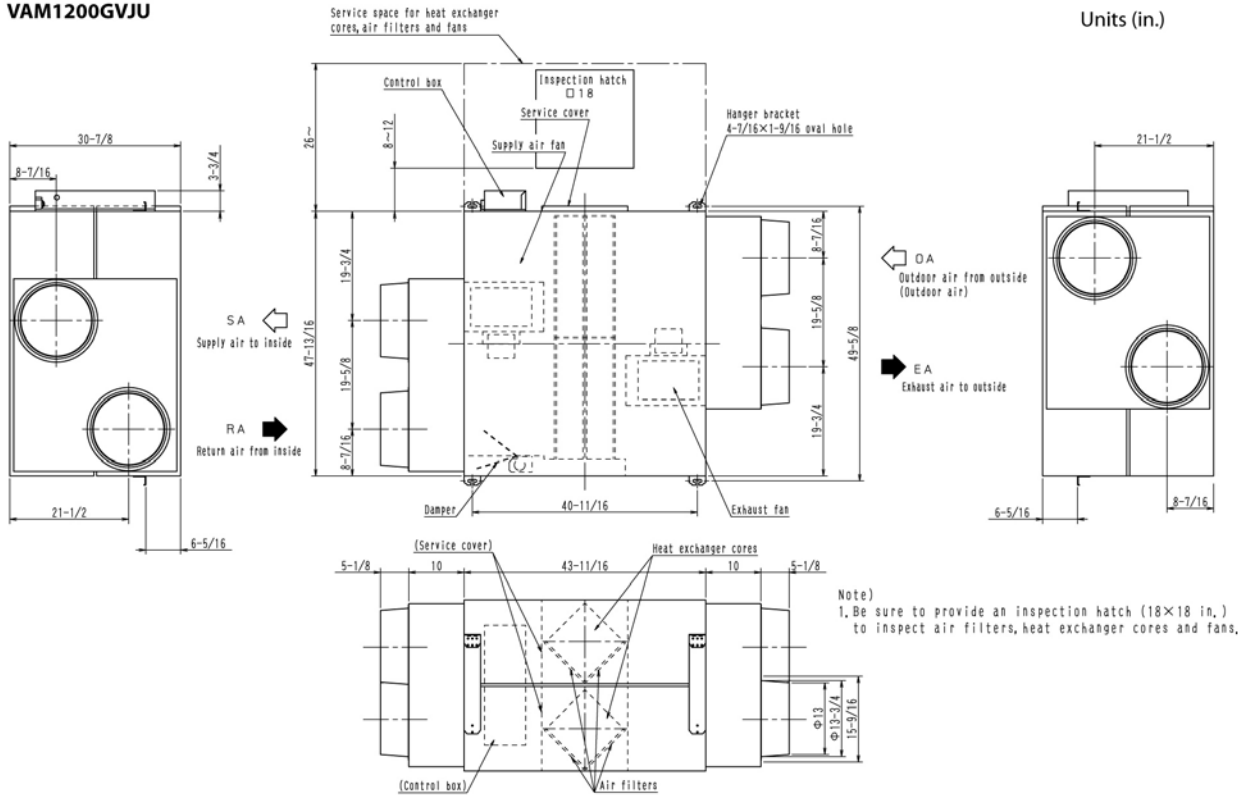
Approval: \_\_\_\_\_  
 Date: \_\_\_\_\_  
 Construction: \_\_\_\_\_  
 Unit #: \_\_\_\_\_  
 Drawing #: \_\_\_\_\_

## Dimensional Drawing - Indoor Unit

VAM1200GVJU

VAM1200GVJU

Units (in.)



Note)  
 1. Be sure to provide an inspection hatch (18×18 in.)  
 to inspect air filters, heat exchanger cores and fans.