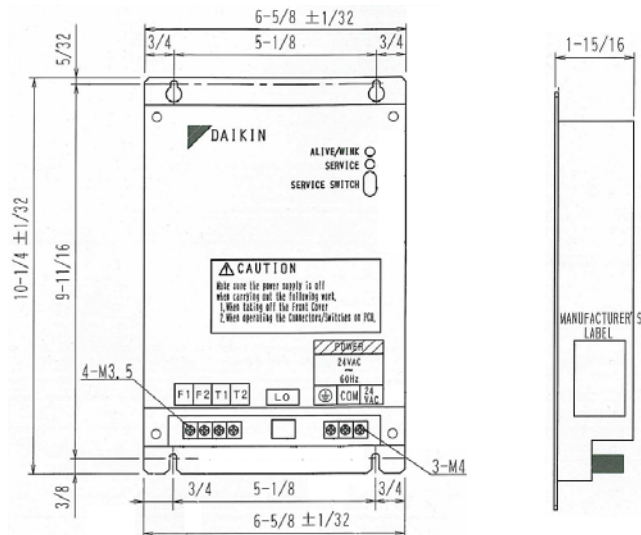


Job Name: _____ Location: _____
Purchaser: _____
Engineer: _____
Submitted To: _____ For: Reference Approval Construction
Submitted By: _____ Date: _____
Unit Designation: Schedule #: _____ Model No.: _____

- | FEATURES / BENEFITS | |
|---------------------|--|
| • | Low voltage design simplifies the installation process. |
| • | Integrate Daikin VRV, SkyAir, ducted and duct-free Split Systems with third party building automation systems supporting the LonTalk® protocol. |
| • | Gateway architecture delivers a fully scalable control interface for up to 64 Daikin indoor unit groups. |
| • | XIF configuration file available at www.DaikinAC.com |
| • | On board T1-T2 input enables forced shut-off of connected VRV air conditioning units. |
| • | Combine with Daikin DCS601C71 I-Touch Controller to implement advanced control features including system scheduling, auto changeover, temperature setpoint limitations. Use as a backup in the event of a BMS failure. |



Power:
Power supply (externally supplied) 24 VAC, 60Hz ±10%
Power consumption 5 watts maximum

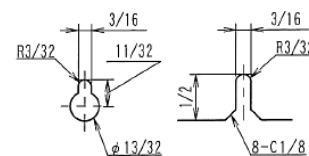
Operating conditions:
Surrounding temperature 14° F to 104° F
Storage temperature 5° F to 122° F
Humidity (% Relative) 0% to 95% (non-condensing)
Dimensions (H x W x D) 10-1/4" x 6-5/8" x 1-15/16"
Weight / Material 3.3 lbs / Stainless Steel
Maximum number of systems 10 systems
Maximum number of indoor units 64 groups / 128 indoor units
Temperature Unit Degrees Celsius (Fixed)

Connectivity:
DIII-Net x 1 VRV equipment communication
FT-X1 (78 Kbps Free Topology) Interface to LonWork® network
T1-T2 Input Forced off function
D-SUB 9 Pin Female Serial Service and commissioning use

Options:
KRP928B2S RA Interface Adapter for DIII-Net Multi-zone controls

Certifications: FCC Part 15 Subpart B Class A

Configuration and engineering for each project are necessary.



SPECIFICATIONS OF COMMUNICATIONS CABLING (DIII-NET)	
TYPE	2-conductor, stranded, non-shielded copper cable / PVC or vinyl jacket
SIZE	AWG18-2
TOTAL LENGTH	Maximum wiring distance between units: 3,280 ft Maximum wiring length: 6,550 ft

LonWorks® and LonTalk® are registered trademarks of the Echelon Corporation.

Daikin AC (Americas), Inc. ♦ 1645 Wallace Drive – Suite 110 ♦ Carrollton, TX 75006

SDS DMS504C71 10-09

www.daikinac.com

(Daikin's products are subject to continuous improvements. Daikin reserves the right to modify product design, specifications and information in this data sheet without notice and without incurring any obligations)

Daikin [bXccf'i b]hmonitoring and control points accessible through the DMS504C71

Check the appropriate box indicating the required integrated points for this project.

Function		Description
Monitoring points	ON / OFF Status	Monitors the On / Off status of the indoor unit.
	Operation Mode Status	Monitors whether the indoor unit is in the Cool, Heat or Fan mode.
	Temperature Setpoint	Monitors the current temperature setpoint of the indoor unit.
	Room Temperature (Note 1)	Monitors the current return air or room temperature of the indoor unit. (Note 1)
	Fan Speed	Monitors the current fan speed setting of the indoor unit.
	Filter Indication Status	Monitors the filter run time and provides service alert.
	Error Status	Monitors the indoor unit malfunction status.
	Error Code	Monitors the specific malfunction code for an indoor unit in alarm state.
	Thermo-on Status	Monitors whether or not the indoor unit is actively cooling or heating.
	Forced Thermo-off Status	Monitors whether the indoor unit is forced to a stop actively cooling or heating.
	Remote Controller ON / OFF Permit/Prohibit Status	Monitors the permit/prohibit status of the indoor units remote controller ON / OFF button.
	Remote Controller Operating Mode Permit/Prohibit Status	Monitors the permit/prohibit status of the indoor units remote controller operation mode button.
	Remote Controller Temperature Setpoint Permit/Prohibit Status	Monitors the permit/prohibit status of the indoor units remote controller temperature Setpoint buttons.
	System Forced OFF Setting Status	Monitors the system forced off status for all indoor units connected to the Lon gateway.
Centralized Controller Operation Enable/Disable Setting Status	Monitors the network variable input status for enable/disable of the Centralized Controller on the DIII-Net bus.	
Indoor Unit Communication Status	Monitors the communication status of the indoor unit to the DIII-Net.	
Operation, configuration, and control points	ON / OFF Command	Starts and stops the indoor unit. (Note 2)
	Operating Mode	Sets the Cool / Heat / Fan / Auto mode for the indoor unit. (Note 2)
	Temperature Setpoint	Commands the temperature setpoint for the indoor unit. (Note 2)
	Airflow Rate (Fan Speed)	Sets the fan speed (high, low) for the indoor unit. (Note 2)
	Filter Indicator Reset	Resets the filter maintenance indicator on the indoor unit.
	Forced Thermo OFF Setting	Forcibly stops all cooling or heating capacity for the indoor unit.
	Remote Controller ON / OFF Restriction Setting	Permits/Prohibits operation of the indoor unit remote controller ON / OFF button.
	Remote Controller Operating Mode Restriction Setting	Permits/Prohibits operation of the indoor unit remote controller MODE button.
	Remote Controller Temperature Setpoint Restriction Setting	Permits/Prohibits operation of indoor unit remote controller temperature setpoint buttons
	System Forced OFF Setting	Forced system stop forces indoor units to stop running base on receive alarm input. Remote controllers then locked out from restarting indoor unit during forced stop event.
	Centralized Controller Enable/Disable.	Network variable input to enable/disable the operation of Daikin centralized controller on the DIII-Net bus.

Application Notes

= Control Items pertaining to the entire system

- Room temperature data (*SNVT_temp_p nvoSpaceTemp_nn*) by default is reported from the Daikin indoor units return air thermistor. This applies to all VRV indoor unit styles and capacities. During periods when the indoor unit is turned off or during certain operating modes that cycle the fan off including defrost operation, hot-start, and system pressure equalization, the reported temperature may not accurately reflect the actual space temperature. For applications where this temperature value will be primary to system control including mode and temperature setpoint management, it is recommended that the Daikin remote temperature sensor (Part No. KRCS01-1B or 4B depending on the model) is specified for each indoor unit and installed within the occupied space or configure the room temperature to be sensed from the temperature sensor in BRC1E71 Navigation Controller if the unit is capable.
- The Daikin indoor unit maintains the settings for temperature, on / off status, operating mode, vane direction and fan speed in non-volatile memory each time they are changed. These settings will not be lost upon a power loss event.

LonWorks® and LonTalk® are registered trademarks of the Echelon Corporation.