

Project Name: \_\_\_\_\_  
 Location: \_\_\_\_\_  
 Engineer: \_\_\_\_\_  
 Submitted to: \_\_\_\_\_  
 Submitted by: \_\_\_\_\_  
 Reference: \_\_\_\_\_

Approval: \_\_\_\_\_  
 Date: \_\_\_\_\_  
 Construction: \_\_\_\_\_  
 Unit #: \_\_\_\_\_  
 Drawing #: \_\_\_\_\_

### **Performance**

<i>Indoor Unit Model No:</i>	FXDQ18MVJU
<i>Cooling Capacity (Btu/hr):</i>	18000
<i>Sensible Capacity (Btu/hr):</i>	12900
<i>Cooling Input Power (kW):</i>	0.185
<i>Heating Capacity (Btu/hr):</i>	20000
<i>Heating Input Power (kW):</i>	0.17
<i>Nominal Ext Static Pressure (inH2O):</i>	0.06
<i>Max Ext Static Pressure (inH2O):</i>	0.17

<i>Indoor Unit Type:</i>	Duct Mounted Slim Type (Low Static)	
<i>Cooling Nominal Conditions</i>	Indoor:	80°F DB/67°F WB
	Outdoor:	95°F DB/75°F WB
<i>Heating Nominal Conditions</i>	Indoor:	70°F DB/60°F WB
	Outdoor:	47°F DB/43°F WB
<i>Nominal Piping Length</i>		25
<i>Nominal Height Separation</i>		0

### **Indoor Unit Details**

<i>Power Supply (V/Hz/Ph):</i>	208-230/60/1ph
<i>Power Supply Connections:</i>	L1, L2, Ground
<i>Min. Circuit Amps MCA (A):</i>	1.3
<i>Max. Fusible Amps MFA (A):</i>	15
<i>Dimensions (HxWxD):</i>	7-7/8x35-7/16x24-7/16
<i>Panel (HxWxD):</i>	N/A
<i>Net Weight (lbs):</i>	63
<i>Weight with Panel (lbs):</i>	

<i>Airflow Rate (CFM wet coil)</i>	440//350
<i>Moisture Removal (pt/h):</i>	
<i>Gas Pipe Connection (inch):</i>	1/2
<i>Liquid Pipe Connection (inch):</i>	1/4
<i>Condensate Connection (inch):</i>	1-1/32
<i>Sound Pressure Level (dBA):</i>	35
<i>Sound Power Level (dBA):</i>	53.1c / 54.1h

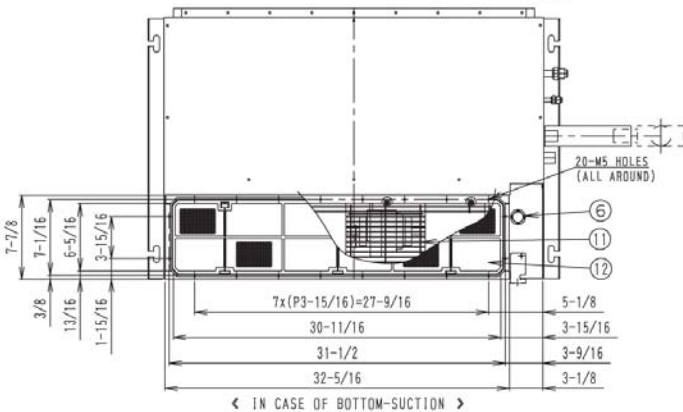
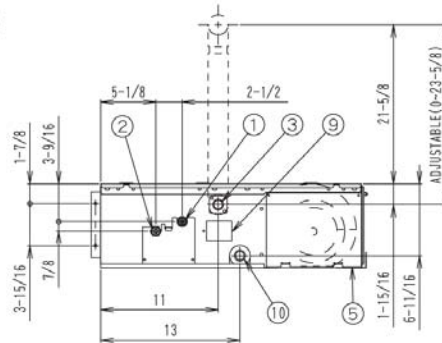
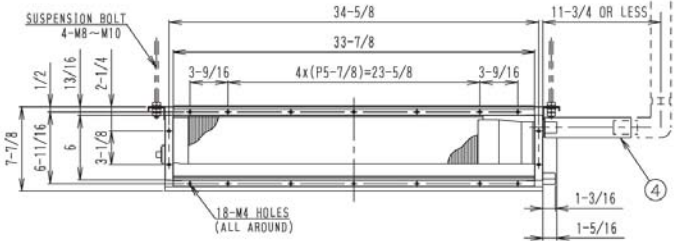
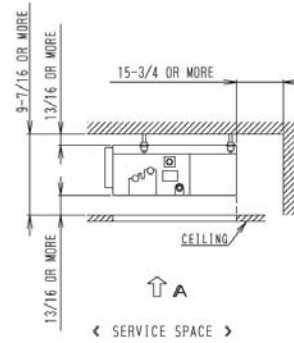
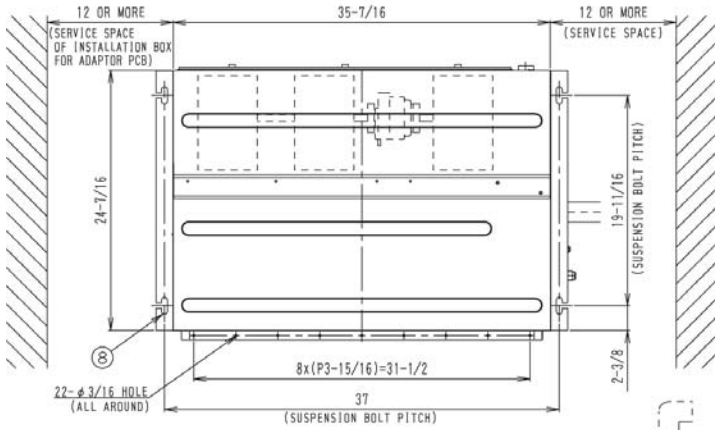
### **Appearance - Indoor Unit**



Project Name: \_\_\_\_\_  
 Location: \_\_\_\_\_  
 Engineer: \_\_\_\_\_  
 Submitted to: \_\_\_\_\_  
 Submitted by: \_\_\_\_\_  
 Reference: \_\_\_\_\_

Approval: \_\_\_\_\_  
 Date: \_\_\_\_\_  
 Construction: \_\_\_\_\_  
 Unit #: \_\_\_\_\_  
 Drawing #: \_\_\_\_\_

## Dimensional Drawing - Indoor Unit



NOTE) 1. IN CASE OF BACK-SUCTION,  
 MOUNT CHAMBER COVER TO BOTTOM SIDE OF THE UNIT.  
 IN CASE OF BOTTOM-SUCTION,  
 MOUNT CHAMBER COVER TO BACK SIDE OF THE UNIT.  
 2. LOCATION OF UNIT'S NAME PLATE: CONTROL BOX COVER  
 3. MOUNT THE AIR FILTER AT THE SUCTION SIDE,  
 (SELECT ITS COLOR/METHOD(GRAVITY METHOD))  
 (50% OR MORE,  
 IT CAN NOT BE EQUIPPED WITH AIR FILTER(ACCESSORY)  
 WHEN CONNECTING DUCT TO SUCTION SIDE.

Project Name: \_\_\_\_\_  
Location: \_\_\_\_\_  
Engineer: \_\_\_\_\_  
Submitted to: \_\_\_\_\_  
Submitted by: \_\_\_\_\_  
Reference: \_\_\_\_\_

Approval: \_\_\_\_\_  
Date: \_\_\_\_\_  
Construction: \_\_\_\_\_  
Unit #: \_\_\_\_\_  
Drawing #: \_\_\_\_\_

**Notes**

Std U.S. Warranty: 6yrs Compressor, 1yrs Parts, 1yr Limited Labor